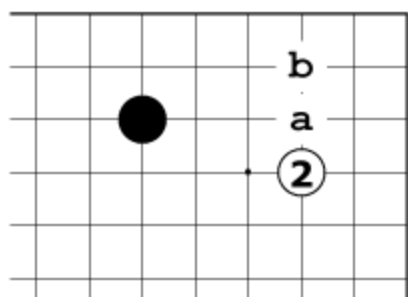
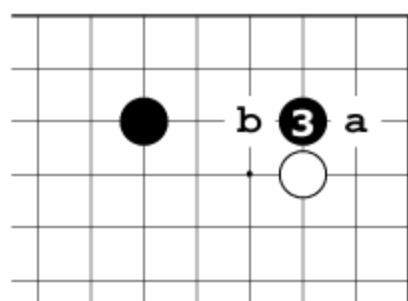


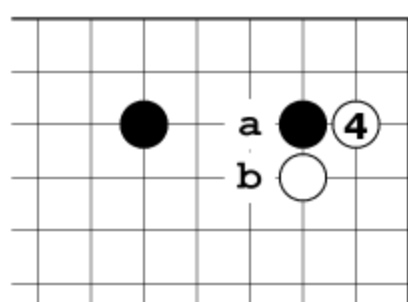
1 The large mokuazushi point (6-3), a remnant of the "new fuseki" movement in Japan in the 1930's. As an initial corner point, its popular usage has not stood the test of time. 'A' or 'B'.



2 Black continues with 'a' or 'b'.

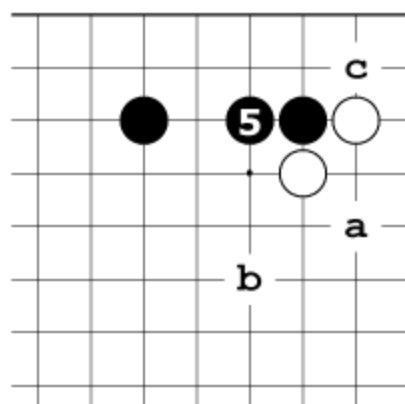


3 White continues with 'a' or 'b'.

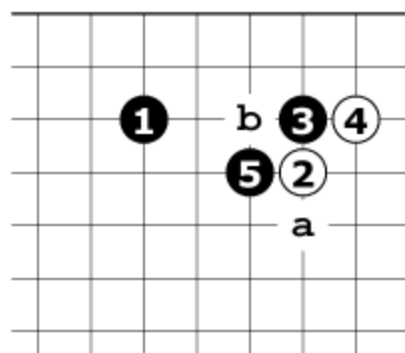


4 Black continues with 'a' or

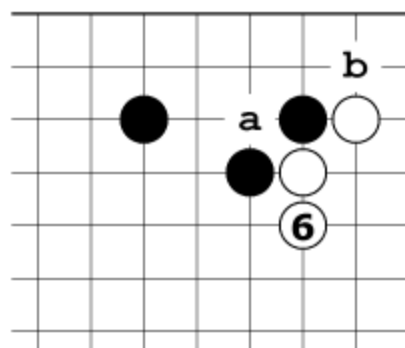
'b'.



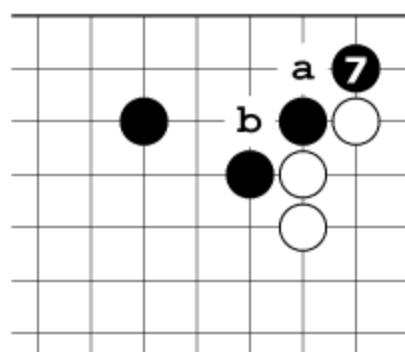
5 White continues with 'a' to 'c'.



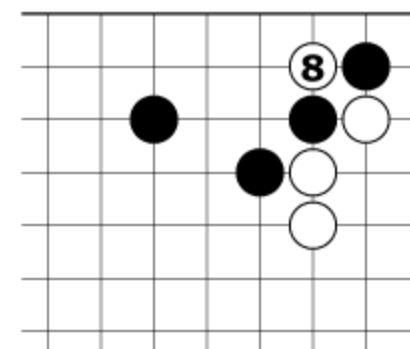
5 White continues with 'a'. White 'b' is not recommended.



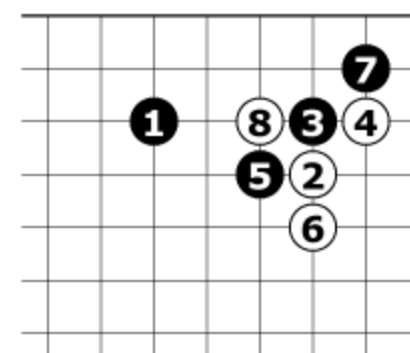
6 Black continues with 'a' or 'b'.



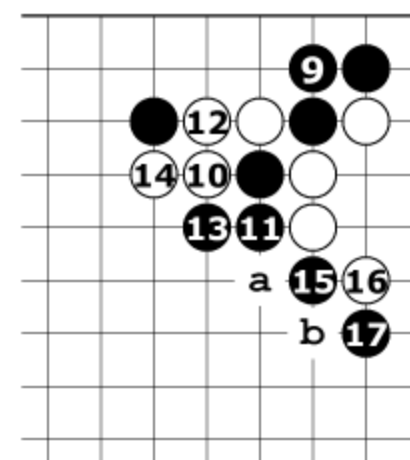
7 White continues with 'a' (a forcing move). White 'b' is a change of direction that results in Black's favor.



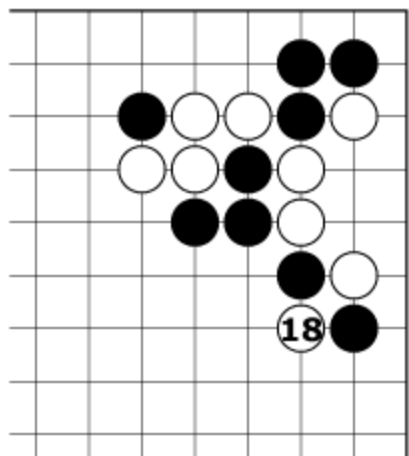
8 White 8 is a simple forcing move.



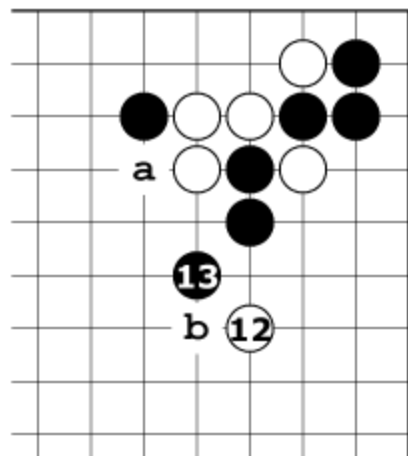
8 White 8 aims to take the top, but is not recommended.



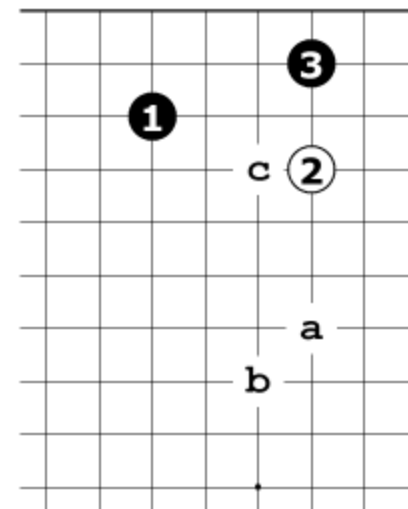
17 White continues with 'a' or 'b'.



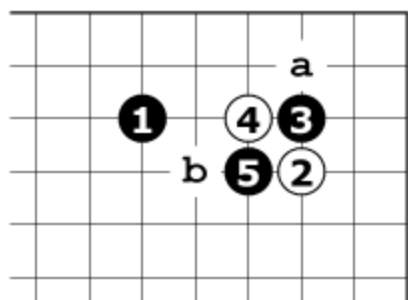
18 White plays 18 to fight for life with a ko.



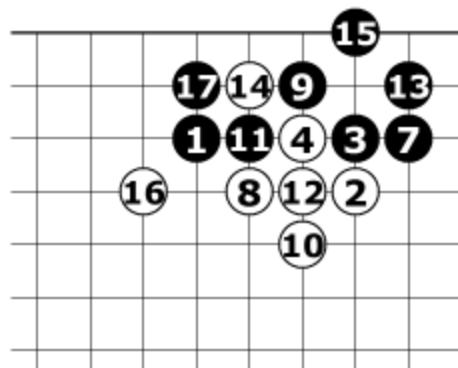
13 White continues with 'a' or 'b'.



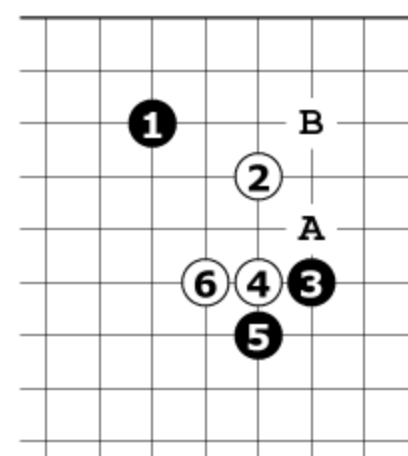
3 White continues with 'a' to 'c'.



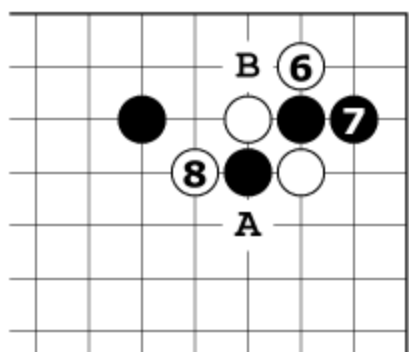
5 White continues with 'a'. White 'b' is not recommended.



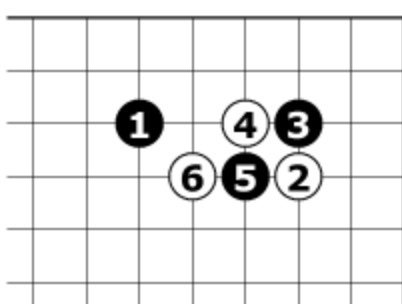
17 The White thickness and sente are more valuable than the small Black corner.



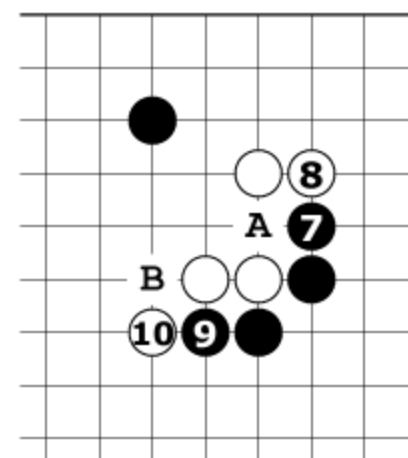
6 'A' or 'B'.



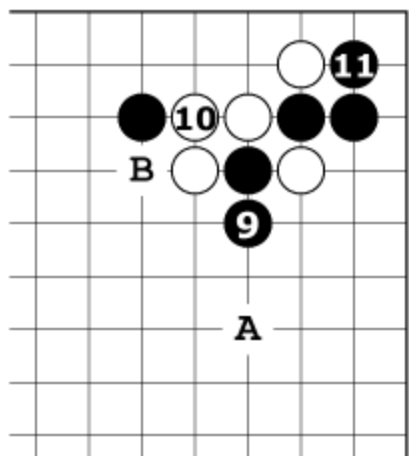
8 'A' is correct, 'B' is not recommended.



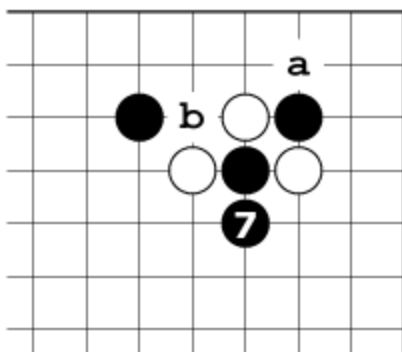
6 White 6 is not recommended.



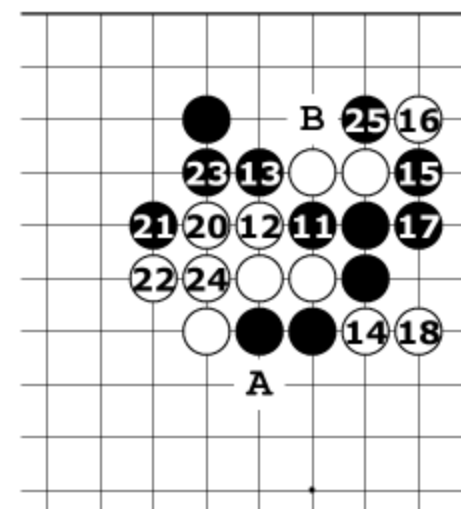
10 'A' or 'B'.



11 'A' or 'B' are ok.



7 White continues with 'a' or 'b'.



25 'A' is correct, 'B' doesn't work.